



Midland Metropolitan University Hospital Joint Oversight and Scrutiny September 2023



Agenda

Item

1. Hello, my name is
2. Getting to know Midland Met
3. Arts, fundraising and community engagement
4. The learning campus, employment opportunities and regeneration
5. Q&A
6. Close



Hello my name is...

- Rachel Barlow – Managing Director
- Jayne Ilic – Communications and Engagement Director

Getting to know Midland Met



Midland Metropolitan University Hospital Programme Company

Purpose

To safely open the Midland Metropolitan University Hospital.

Vision

To transform clinical services, acting as a catalyst for enhanced care and treatment, improving life chances and health outcomes across our communities.

Our values

Ambition - Respect - Compassion

Objectives

Patients



Enable outstanding health outcomes for patients with equality of service provision no matter where you live.

Provide a safe and welcoming environment for care.

Provide integrated care services that are seamless for patients.

People



Develop career pathways for local people.

Provide an inspiring and inclusive place to work.

Provide comfortable and productive spaces that make people feel valued.

Population



Be #morethanahospital engaging with local people to provide accessible and inspiring community spaces.

Seize every opportunity for MMUH to regenerate the neighbourhoods.

Create a catalyst to improve life chances for today's and future generations.

Getting to know Midland Met

Midland Metropolitan University Hospital will be the acute centre for care for Sandwell and West Birmingham NHS Trust and includes:

- A purpose-built emergency department with co-located imaging and diagnostic services.
- A dedicated children's emergency department and assessment unit.
- Operating theatres for both emergency and major planned surgery.
- A midwife led birth unit next to a delivery suite, two maternity wards an antenatal clinic and a neonatal unit.
- Same day emergency care for adults.
- The regional sickle cell and thalassaemia centre.

Patients can expect to receive all of this as a standard part of our care model:

- The same high standards any day of the week with senior doctors leading expert clinical teams.
- Diagnostic tests including X-ray, MRI and CT scans, plus other tests for urgent care.
- Our Winter Garden and outdoor spaces are designed to help patients stay active.



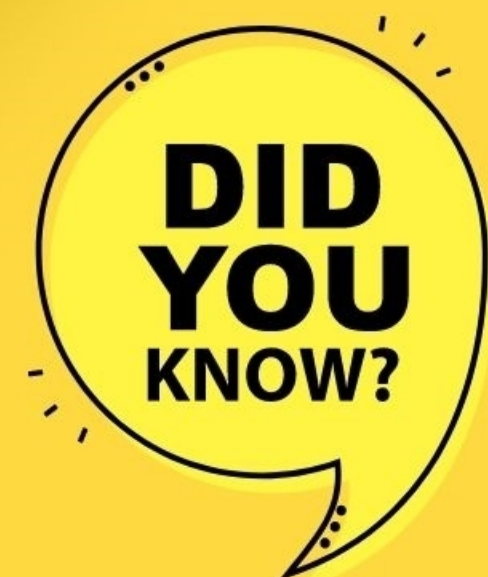
The benefits of our new hospital

- The hospital will house state-of-the-art equipment to support faster diagnosis and improve patient outcomes.
- It will be home to 11 emergency, trauma and elective inpatient operating theatres, maternity theatres and 15 birthing rooms for maternity services.
- The wards and rooms centre on patient wellbeing. All bedrooms have an external view onto one of the courtyards or surrounding areas of the hospital.
- The design includes 50 per cent single rooms with en-suite shower rooms in the main ward areas which will reduce the risk of spreading infections.
- The hospital provides a dementia friendly environment. Colours and clear bed numbers will help patients identify where they are. Layouts of wards will be the same, with each group of four beds within a ward having a different colour theme.



There will be separate routes for inpatients and visitors.

Inpatients will be transferred around the new hospital via separate corridors and lifts to those used by visitors. It will preserve patient privacy and dignity whilst moving around the hospital.



The Winter Garden is more than just a place to meet.

It will not only be an inviting place for staff, patients and visitors to meet and relax, but it will also be the main welcome point housing a contemporary art gallery.

Visitors will be able to find their way around with the help of clear signs, volunteers and wayfinding from this location.



Our latest progress video highlights some of our main achievements...



Our future service model

Whilst Midland Met will care for patients that need emergency care or a stay in hospital, most outpatient care, day-case surgery and routine diagnostics will remain at the Sandwell and City Hospital sites alongside Rowley Regis Hospital and Leasowes. This includes:

- A 24/7 urgent treatment centre in Sandwell.
- Birmingham Treatment Centre and Birmingham and Midland Eye Centre (BMEC) at City Hospital.
- Provision for step down / rehab facilities.

Significant changes are taking place in our community and primary care services so that even more care can be provided in people's own homes.



OUR FUTURE SERVICE MODEL BY SITE

(Plans as of January 2023)

DUDLEY ROAD SITE (City Hospital)

BIRMINGHAM TREATMENT CENTRE

OUTPATIENT SERVICES

Including:

- General clinics for multi-speciality use.

Bespoke OP services

- ENT and SLT
- Breast services
- Gynaecology & Colposcopy
- Hearing Services
- Orthopaedic & Fracture Clinic
- Oral Surgery (TBC)

DIAGNOSTIC

- Endoscopy Unit
- Imaging (PE, US, MRI, CT)
- Phlebotomy
- Cardiac Diagnostics Respiratory Physiology (main dept)

DAY TREATMENT

Day Surgery Unit (6 theatres) & minor ops

OTHER

- Pharmacy
- Research

SHELDON

OUTPATIENT SERVICES

Including:

- Dermatology
- Cardiac Rehabilitation
- Pain Management Clinics Therapy Services (Rehab, OT, Neurology, SLT, MSK)
- Dietetics

DGM Building

- Clinical Admin
- National Poisons Information Service (NPIS)

BIRMINGHAM MIDLAND EYE CENTRE (BMEC)

OUTPATIENT & DIAGNOSTIC SERVICES

- Ophthalmology clinics (adults & children)
- Glaucoma clinics
- Visual Function dept Orthoptics
- Optometry
- Other specialist eye diagnostics
- Behcets Service
- Medical Illustration

OPHTHALMOLOGY A&E

DAY TREATMENT

Ophthalmology Day Surgery (adults & children)

OTHER

- Clinical Admin
- Training facilities

MIDLAND METROPOLITAN UNIVERSITY HOSPITAL

URGENT TREATMENT CENTRE

ACUTE INPATIENT BEDS: 732

- 13 Adult wards (32 beds each) including coronary care (14) beds, hyper acute stroke (6) beds & level 1 beds (16 distributed within wards)
- 2 Maternity wards (56 beds)
- 30 Critical Care beds
- 36 Neonatal cots
- 50 Paediatric beds (& 6 day case spaces)
- 108 AMU beds & 24 Same Day Emergency Care trolleys

EMERGENCY / ELECTIVE SURGERY / DAY CASE

- Emergency Department
- 2 Trauma theatres
- 2 Emergency theatres
- 7 Elective theatres
- 2 Maternity theatres
- 15 Delivery Suites
- 6 Birthing centre
- Medical Infusion/Procedure Suite & SCA

DIAGNOSTIC

- Endoscopy Unit
- Cardiac Interventional Suite (2 cardiac labs) Imaging (Plain x-ray, US, Ante Natal US, MRI (1), CT (2), Physics & Nuclear Medicine, IR) Medical Illustration (inpatient support) Essential Service Laboratory Medical intervention unit
- Cardiac Diagnostics (main dept)
- Respiratory Physiology (inpatient support)
- Neurophysiology (inpatient support)

OUTPATIENT SERVICES (Bespoke)

- Antenatal Care and phlebotomy
- Paediatrics (including audiology test room, orthoptic consulting rooms)
- Urodynamics

OTHER

- Research
- Pharmacy
- Clinical and Corporate Administration
- Education Centre
- Multi-faith Centre
- Mortuary
- Integrated discharge hub

Community Intermediate Care Beds

SANDWELL TREATMENT CENTRE

OUTPATIENT SERVICES

General clinics for multi speciality use Bespoke OP Services including:

- ENT
- Gynaecology + Colposcopy
- Paediatrics
- Orthotics (main dept)
- Orthopaedics & Fracture Clinic
- Midwifery led Antenatal Care
- Dietetics
- Dental
- Therapy Services - (MSK, Hand Therapy, SLT, OT, Foot health)
- Cardiac Rehabilitation Clinical Research Facility

DIAGNOSTIC

- Endoscopy Unit
- Imaging (Plain x-ray, US, Ante natal US, MRI, CT)
- Medical Illustration
- Phlebotomy
- Cardiac Diagnostics
- Neurophysiology Service (main dept)
- Respiratory Physiology
- Pathology (specialist labs)
- Integrated discharge hub

SANDWELL URGENT TREATMENT CENTRE

PRIMARY CARE GP practice

OTHER

- Trust Headquarters
- Occupational Health Department Pharmacy
- Mortuary (main dept inc. PM)
- Clinical and Corporate Admin Academic & Research (main dept)
- Education Centre

DAY TREATMENT

- Chemotherapy Services
- Medical Infusion Suite
- Day Surgery Unit (4 theatres)

Community Intermediate Care Beds

ROWLEY REGIS HOSPITAL

OUTPATIENT SERVICES

General clinics for multi-speciality use including:

- Community Clinics
- Ophthalmology
- Dental
- Urology
- Gynaecology (community)
- ISHUS
- Dietetics
- Children's services
- Therapy Services - (MSK, Rehab, SLT, OT, Foot health)

DIAGNOSTIC

- Imaging (Plain x-ray, US)
- Phlebotomy
- ECG

PRIMARY CARE COMMUNITY

Admission Avoidance Service

URGENT COMMUNITY RESPONSE

ADMISSION AVOIDANCE

VIRTUAL WARDS

OTHER

- Clinical and Corporate Admin
- Main Catering Unit

DAY TREATMENT

- Heart of Sandwell Day Hospice

Community Intermediate Care Beds

LEASOWES

COMMUNITY SERVICES

ICARES, District Nursing, ESD Stroke Team, School Nursing, Health Visiting, Specialist Nursing Teams (Continence, Heart Failure, Diabetes, Falls), ISHUS, Community Rehabilitation Teams, Case Management Team, Foot Health, Admissions Avoidance Team, HAPO, MSK Clinics, Hand Therapy Service, Specialist Diabetes Service, Community Paediatric Nursing, Specialist Nursing & Therapy Teams, Respiratory Team, HIV Clinic, GP practices & other primary care services.

Clinical services transformation

In preparation for the opening of Midland Met, crucial work is being undertaken across 12 areas to transform our services, focusing on our acute care model. It comprises of these services.

Emergency Department 2 site to 1	Senior decision making supported by rapid diagnostics to support right care right place.	Acute therapies 2 sites to 3	Extended working hours will enable patient therapy provision to support earlier discharge.
Same Day Emergency Care 2 site to 1	Expansion of same day emergency care (SDEC) pathways to optimise ambulatory care, reducing admissions and assessment unit demands.	Imaging 2 sites to 3	Improved turnaround times will support rapid decision making at the front door. Demand management and artificial intelligence will improve efficiency.
Assessment Units 2 site to 1	Rapid diagnostics and decision making over seven days to reduce length of stay (LOS) in assessment units.	Endoscopy 2 sites to 3	Separation of inpatient and outpatient endoscopy to the treatment centres and Midland Metropolitan University Hospital to support patient flow and productivity.
Older peoples Care & Frailty 2 site to 1	End to end acute and community care will prevent patients being admitted unnecessarily or reduce LOS if admitted.	Place Partnership	Community beds and home-based services right sized to enable increased supported discharge from acute settings.
Stroke Decoupling	Rehabilitation to be provided in a community setting to improve patient care, end of life experience and release acute beds.	Theatres 2 sites to 3	Increased use of day case pathways with day case activity split from elective and emergency activity will improve.
Cardiology	Increased use of ambulatory pathways and day case procedures will prevent patients being in hospital unnecessarily.	Enhanced Care	Provision of a post anaesthetic care unit (PACU) and ward based enhanced care to support care pathways.



**Patient Objective Benefit Total
£796m**

Enable outstanding health outcomes for patients with equality of service provision no matter where you live.

Provide a safe and welcoming environment for care.

Provide integrated care services that are seamless for patients.

Patients – top 3 benefits	£M
Reducing the acute bed base	448
Split of Elective and ED	244
Agency Savings	39
TOTAL PATIENT RELATED BENEFITS	796



**People Objective Benefit Total
£982m**

Develop career pathways for local people

Provide an inspiring and inclusive place to work

Provide comfortable and productive spaces that make people feel valued

People – Top 3 benefits	£M
Consultant Journeys	356
Employment GVA	217
Staff Satisfaction Increase	172
TOTAL PEOPLE BENEFITS	982



**Population Objective Benefit Total
£241m**

Be #morethanahospital engaging with local people to provide accessible and inspiring community spaces.

Seize every opportunity for MMUH to regenerate the neighbourhoods.

Create a catalyst to improve life chances for today's and future generations.

Population – Top 3 benefits	£M
MMUH Construction GVA	142
Homes England GVA	41
Homes England Council Tax	23
TOTAL POPULATION BENEFITS	241

- The Midland Met programme of service transformation, workforce redesign, and building construction, is the biggest such development ongoing in the English NHS at this time.
- To ensure that we can fit effectively into the new hospital we have a plan to reduce the number of unfunded inpatient beds.
- We have successfully progressed the 62 bed-closure plan with a total of 50 beds now closed and a further 12 due for closure by October 2023. To ensure that we can safely close unfunded beds and mitigate against any risks, our teams are achieving this through multiple schemes aimed at admission and attendance avoidance.
- These include urgent community response, frailty same day emergency care (FSDEC), medical and surgical SDEC, virtual wards and care homes admission avoidance. All these schemes are starting to meet or even exceed the expectations that we have of them.
- None of these essential transformations would be possible without our partners at Place level – Sandwell Metropolitan Borough Council, adult social care, the Integrated Care Board, local GPs and colleagues in the voluntary and third sector.



Arts, fundraising and community engagement



Our arts programme

- The hospital will have the most amazing gallery space, one of the longest in the region.
- We are investing in high quality arts, education, and heritage programmes to help enhance the experience of our patients.
- We'll deliver an exciting arts and culture programme with lots of great cultural partners for our opening festival.
- We have several programmes in development that imagines the hospital as a site for socially engaged art, a place for children beyond the classroom and a civic and community hub and garden.



Supporting We Are Metropolitan

- Your Trust Charity is the registered charity of Sandwell and West Birmingham NHS Trust and is passionate about making a difference to people's lives.
- Your Trust Charity is working hard to deliver the 'We Are Metropolitan' fundraising campaign and raise £2m to:
 1. Develop community spaces.
 2. Create a welcoming and healing environment.
 3. Enhance research and development.
- Your Trust Charity is helping our organisation play a major role in new community regeneration initiatives within our local communities.



Launch of the Midland Met Mobile

- Our Midland Met Mobile is a repurposed patient transport vehicle.
- It will be out and about in our communities, shopping centres and libraries spreading the word about Midland Met.
- It will also be visiting our sites so we can speak to colleagues about the benefits and opportunities associated with Midland Met.



Our goal is to ensure that every resident of Sandwell and West Birmingham knows that Midland Met is on the horizon and here to transform their healthcare for years to come.

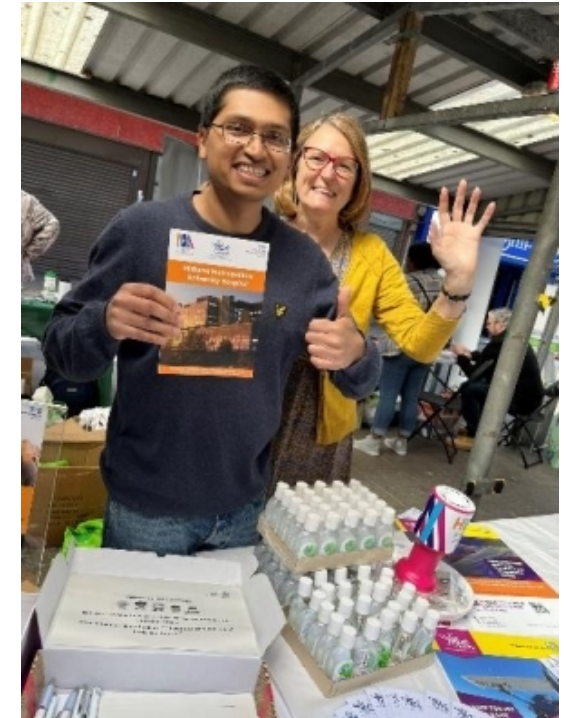
We'll be taking our messages out into the community, driving into each and every one of our neighbourhoods. We know that we have strong communities around us, but we must engage and enable them to feel a belonging to our new hospital.

We'll initially be out on the road from mid September until the end of October visiting libraries across our communities from Wednesbury to West Bromwich and lots of places in between.

Midland Met Mobile hits the road...



We have strong relationships across health, social care, the voluntary, community and faith-based sectors. These organisations are based in our communities and support local people.



We are completing public engagement across the 12 core transformation areas. So far, we've:

- Completed our day case surgery conversation.
- Our stroke services conversation is in progress.



Near Neighbours' events took place in 2023 and more are planned for 2024. We've spoken to over 900 residents, listening to their concerns and ideas.

During 22/23 we talked to residents of Sandwell at Town Teams led by Healthwatch and there is more to come.



The learning campus, employment opportunities and regeneration





Midland Met learning campus

- Partnership with Sandwell College, Aston and Wolverhampton universities, incorporates The Learning Works.
- Focus on skill shortages across additional clinical services, allied health professionals and nursing and midwifery.
- Provides pathways into long term employment for residents and will accelerate the delivery of transformational regeneration in the area.



- 1280 learners will be assisted every year across a range of short and longer term courses.
- Includes community space; the design will encourage the community to engage, explore and seek out opportunities.
- £12.9m secured from the Towns Fund government programme.
- Gateway location on our own land at the front of Midland Met – students will be able to connect training to real life experience.



Opportunities at or close to Midland Met

- Midland Met learning campus.
- Community garden.
- New housing – mixed modes, apartments and houses.
- Employment opportunities, commercial and retail.
- Education from 16+ through to university level.
- Improved connectivity between canal tow path and hospital site.
- Active travel opportunities – bike lanes connecting Sandwell and Birmingham.



- The Trust board have agreed to 484 more staff at Midland Met and there are several active recruitment campaigns underway to support us in being fully staffed.
- We hosted a dedicated consultant open day in July at Midland Met to support our objective to recruit to these consultant roles.
- Further events are being worked on with a nursing recruitment day being planned for November 2023.
- We are focusing heavily on employment opportunities for local people. We've set a target of over 35 per cent of jobs being available to residents.



- Our recruitment team is working closely with widening participation colleagues to develop sector-based work academy programmes (SWAPs) both with external partners (Sandwell College) and in house teams.
- Our SWAP programme focuses on upskilling residents to help them gain employment. The aim is to support people to confidently apply for entry level roles like healthcare support workers and ward service officers.
- Programmes like this are essential to help us achieve our ambitious goal of having our workforce made up by 35 per cent of residents.
- Midland Met is #morethanahospital and will provide the catalyst for growth, regeneration and employment opportunities in the immediate surrounding areas.



How Midland Met will support regeneration

Economic

- Increasing skills, employment and wages, attracting new businesses and investment, redevelopment of brownfield land.
- Encouraging new housing and infrastructure investment.

Social and cultural

- Interventions which promote health and wellbeing, strong and engaged communities, arts and culture.

Environmental

- Sustainability and net zero carbon.
- Active travel initiatives, accessible green space and measures to reduce air pollution.

Effective delivery requires:

- Leadership and vision.
- Collaborative working and partnerships.
- Aligning resources.

Keeping stakeholders informed



System and stakeholder visits

We have hosted several visits over the past year with key stakeholders including John Spellar, MP for Warley who was thoroughly impressed with the progress made.

As the esteemed Member of Parliament toured through the corridors of the Midland Metropolitan University Hospital, he was struck by the vibrant energy and unwavering commitment displayed by all involved in the build.

When meeting with stakeholders, we explain the clinical and operational changes that we need to make to provide community and acute services differently once Midland Met opens in 2024. These service transformations will ultimately help us realise the numerous benefits that Midland Met will drive in and for the health and wealth of our communities.

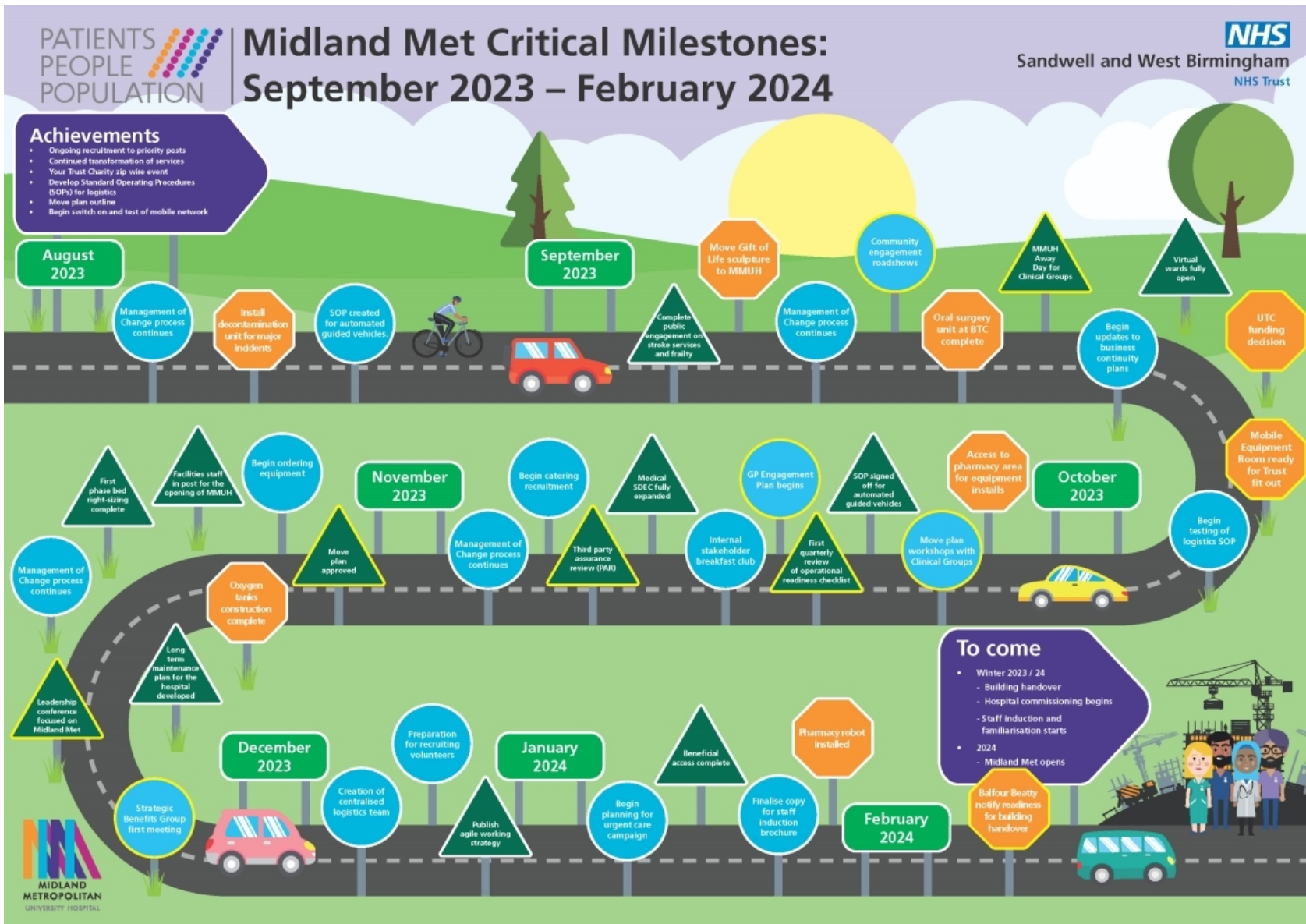


Transport and travel

- Whilst Midland Met has been designed to accommodate plenty of covered parking within the building for staff and patients, there are several programmes to support sustainable travel.
- Bike lanes from Sandwell and Birmingham will converge on Midland Met. The canals are being redeveloped to offer a scenic route to site and buses will be regularly scheduled, arriving and departing from the front of Midland Met.
- We are working with Transport for West Midlands on the public transport routes with potential for onsite bus stops and a new bus route.
- There are plans to help support routes for local residents of the Sandwell Borough to get to Midland Met via public transport.









Midland Met Monthly



MidlandMetUH SWBHnhs midlandmetuh

Latest updates on the Midland Met development and beyond

Issue 07 - July 2023

Lights, Camera, Action – Midland Met is beamed live to three million viewers on NHS birthday



ITV Central News presenters Sameena Ali Khan and Steve Clamp ahead of their live broadcast from the Winter Gardens at Midland Met on 5 July.

And we're live from Midland Met!
On 5 July, the 75th birthday of the NHS, the ITV Central News team decamped from Gas Street

The communications team worked in harmony with colleagues across the new hospital team to demonstrate our Trust values in ensuring every detail went according

first contact right through to the day of broadcast.
Kitted out in full PPE, presenters Sameena Ali Khan and Steve Clamp delivered the broadcast from the Winter



<https://www.youtube.com/watch?v=dxaRwTnIGnk&list=PLoYmVhk1vF7WISITSw-uXuW9JO2YMiF2H>

Over to you....



Thank you



To find out more visit [swbh.nhs.uk](https://www.swbh.nhs.uk) or email
swbh.comms@nhs.net

#MoreThanAHospital